

# SUPPLIER OF FULL SCENARIO CHARGING APPLICATIONS SOLUTIONS





Est. since **19 April 1971**

more than **75**  
Overseas  
Customers

**One stop solution**

**Power**   
**Telecommunications**

Established on April 19, 1971, PT Voksel Electric Tbk. (“the Company”) is engaged in cable industry. In 1989, the Company changed the status into a foreign capital investment through a joint venture agreement with Showa Electric Wire & Cable Co. Ltd. (“Showa”), a prominent cable company in Japan that has changed its name into SWCC Showa Cable Systems Co. Ltd. since 2006. In line with the rapid development of cable industry and more aggressive strategic growth, the Company held its initial public offering on the Jakarta Stock Exchange (now is the Indonesia Stock Exchange) and Surabaya Stock Exchange on December 20, 1990. With preservation and dedication from all the Company’s management and staff, the Company successfully positioning itself as one of the leading cable manufacturers in Indonesia. The Company’s core businesses include manufacturing of power, telecommunication, and fiber optic cables.

Through its continuous pursuit for quality excellence, the Company was awarded numerous international quality certificates, such as ISO 9001:2015 from SGS Yarsley International Certification Services, Ltd. The Company is highly committed to prevent environmental pollution and enhance the safety and health in the working environment. In line with this commitment, the Company has obtained ISO 14001:2015 and ISO- 45001:2015. from SGS Yarsley International Certification Services, Ltd. The Company also obtained SMK3 certificate in 2018. Besides, the Company obtained KEMA Certificate from KEMA Nederland B.V. and TUV certificates. At the beginning of 2016, the Company participated in development and research related to new products that will be launched in the following years. The company is also expanding by adding business lines for high voltage. In 2020, the Company began to expand capacity and production area for this product, and in 2023, a 42.97% stake was taken over by Hengtong Optic-Electric International Co., Ltd.



# HengTong Group

HengTong Group is a national innovative enterprise in China's optical fiber network, energy Internet, big data Internet, new energy, new materials and other fields.

More than 70 wholly-owned and holding companies (including 5 listed companies), with industrial layout in 15 provinces across the country, and has created 12 industrial bases and more than 40 overseas marketing technology service branches in Europe, South America, Africa, Asia. The company's business covers more than 150 countries and regions, and the group's revenue in 2022 has reached CNY 156 billion.

**1991**

Founded in

**TOP100**

Chinese private enterprises

**TOP500**

Chinese enterprises

**156billion**

2022 Revenue

**25%**

Global market share of optical communication

**5**

Listed companies

**TOP3**

Submarine cable

**TOP3**

Optical fiber communication

**TOP3**

Marine communication

**20%**

Global market share of marine communication



Communication industry



Electric power industry



New materials industry



International industry



New business segment

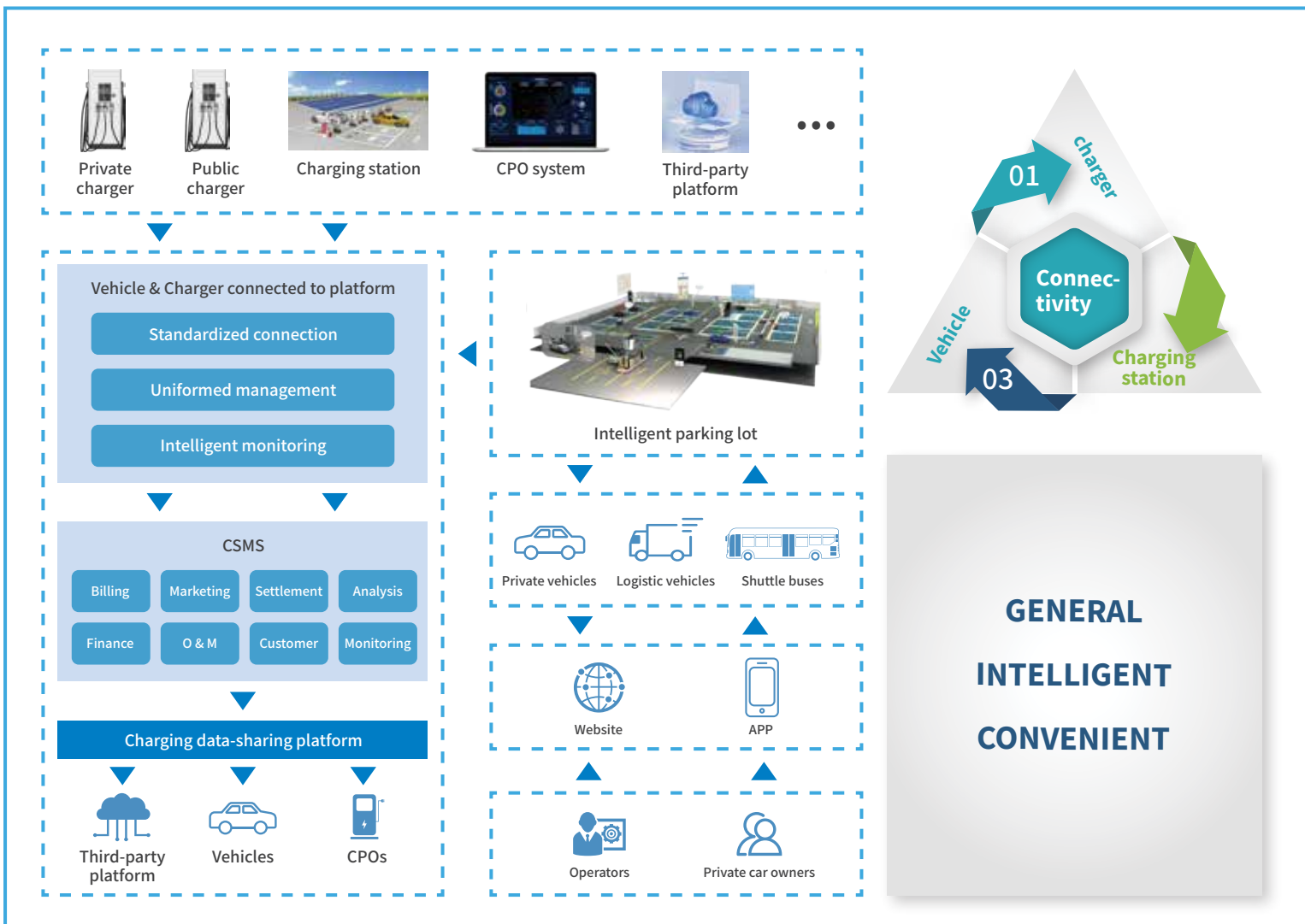


Communications operation

## BEST CHOICE FOR OPERATION

Through our charging operation management platform, you can easily establish the intelligent management of charging station. With charging data analysis capability, operators get better understanding of user needs.

Allowing third-party access to platform service .Suitable for multiple scenarios e.g. bus charging station, public charging station, commercial real estate charging station, rental vehicle charging station etc.



## PRODUCT SYSTEM

---

7-200kW+



AC Charger



DC Charger

## ENJOY THE CHARGING PROCESS

Exquisite appearance

Cost-effective

Highly flexible

HT-Icharge innovates charging pile power distribution technology and launches "I+X energy matrix" to achieve exponential growth of charging power. The charging management platform intelligently analyzes the power demand of different vehicles according to big data, so as to achieve flexible and intelligent allocation of charging power. In addition, the charging pile also support different charging initiating methods, charging cable options, display screen size options, and many other configurations can be customized.





## SERVICES AND CASES

HT-ICHARGE adheres to the service concept of "altruism and win-win", that is, "starting from the customer's perspective and seeking a win-win solution with professional capabilities", and runs the service core of "professional, fast, and satisfying" into all aspects of the company's business

### Installation and commissioning

HT-ICHARGE engineers and their partners provide professional installation and debugging services.

### Training

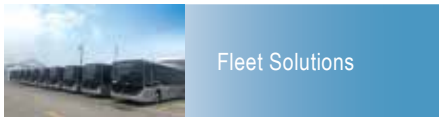
On-site training and online video training to impart complex equipment operation and maintenance skills to customers for maintenance personnel, help them improve their work skills.

### Remote services

By providing technical support and advanced product and application explanations through email, or video, responsive fault analysis and technical guidance can be provided.

### Accessory

Original accessories and spare parts ensure interchangeability, reliability and safety.



Fleet Solutions



Highways Service Area Solutions



Commercial real estate solutions



Ride Hailing Solutions



Gas Station Solutions



Photovoltaic-Energy storage-Charging



Shanghai Longdong Avenue Charging Station



Kunshan Bus North Station



Donghai Bus Station



ZhenJiang Photovoltaic-Energy storage-Charging Station



Suzhou Petrochemical Gas Station



Harbin Bus Charging Station

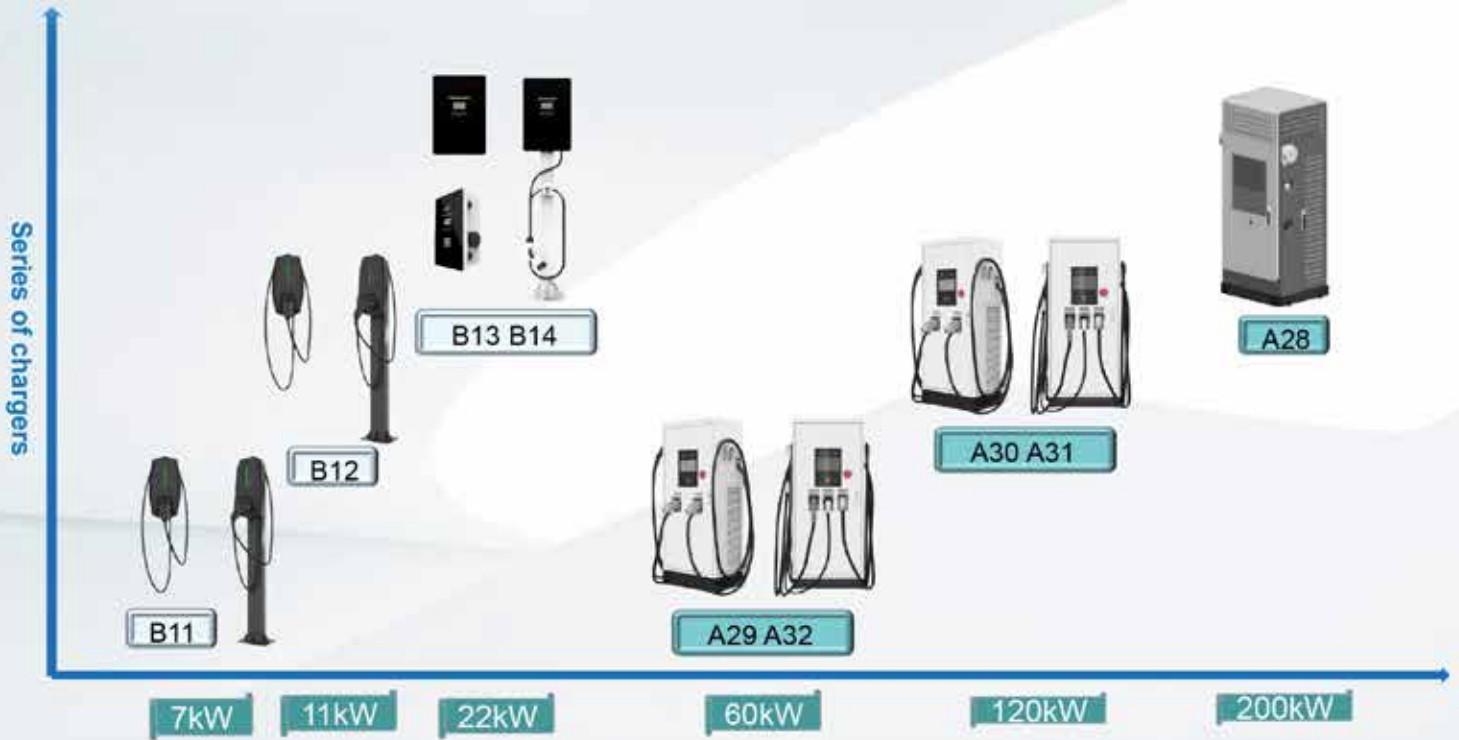


Hainan Sinopec Gas Station Service Area



Danzhou Baimajing Service Area

# PRODUCT PORTOFOLIO



## CERTIFICATION



7kW AC charger  
TN-QCJ01-B11

11kW AC charger  
TN-QCJ01-B12

22kW AC charger  
TN-QCJ01-B13  
TN-QCJ01-B14

60kW DC charger  
TN-QCZ02-A29  
TN-QCZ02-A32

120kW DC charger  
TN-QCZ02-A30  
TN-QCZ02-A31

# B11 B12

AC Charger

7/11kW



Datasheet	Model	TN-QCJ01-B11	TN-QCJ01-B12
Input	Power Supply	1P+N+PE	3P+N+PE
	Rated Voltage	230V AC	400V AC
	Rated Current	32A	16A
	Frequency	50/60Hz	50/60Hz
Output	Output Voltage	230V AC	400V AC
	Maximum Current	32A	16A
	Rated Power	7kW	11kW
	Charge Connector	Type 2	
User Interface	Cable Length	4m	
	Enclosure	Plastic PC940	
	LED Indicator	Green/Yellow/Red	
	RFID Reader	Mifare ISO/IEC 14443A	
	Start Mode	Plug&Play/RFID card/App	
	Communication	WiFi	Yes
Bluetooth		No	
Ocpp		Ocpp 1.6 Json(Ocpp 2.0 upgradable)	
Safety	Energy Meter	No	
	RCD	6mA DC	
	Ingress Protection	IP65	
	Impact Protection	IK10	
	Electrical Protection	Over current protection, Residual current protection, Surge protection, Over/Under voltage protection, Over/Under frequency protection, Over temperature protection	
	Certification	CE	
	Certification Standard	EN IEC 61851-1:2019, IEC 61851-1:2017, IEC 61851-21-2:2018	
Environment	Installation	Wall-mount/Pole-mount(Optional)	
	Work Temperature	-30°C~+50°C	
	Work Humidity	5%-95%	
	Work Altitude	<2000m	
Package	Product Dimension	325*181*87mm(H*W*D)	
	Package Dimension	430*290*200mm(L*W*H)	
	Net Weight	3.2kg	
	Gross Weight	4.0kg	
	External Package	Carton	

# B13 B14

AC Charger

22kW



Datasheet	Model	TN-QCJ01-B13	TN-QCJ01-B14
Input	Power Supply	3P+N+PE	
	Rated Voltage	400V AC	
	Rated Current	32A	
	Frequency	50/60Hz	
Output	Output Voltage	400V AC	
	Maximum Current	32A	
	Rated Power	22kW	
	Charge Connector	Type2	
User Interface	Enclosure	Galvanized steel	
	Front Panel	Temper glass	
	LCD Display	2.7" black & white LCD	
	LED Indicator	Green/Yellow/Red	
	RFID Reader	Mifare ISO/IEC 14443A	
	Start Mode	Plug&Play/RFID card/App	
Communication	WiFi	Yes	
	Ethernet	Optional	
	3G/4G	Optional	
Safety	Ocpp	Ocpp 1.6 Json(Ocpp 2.0 upgradable)	
	Energy Meter	MID certified	
	RCD	30mA TypeA+ 6mA DC	
	Ingress Protection	IP54	
	Impact Protection	IK08	
	Electrical Protection	Over current protection, Residual current protection, Short circuit protection, Surge protection, Over/Under voltage protection, Over/Under frequency protection, Over temperature protection	
	Certification	CE	
Certification Standard	EN IEC 61851-1:2019, IEC 61851-1:2017, IEC 61851-21-2:2018		
Environment	Installation	Wall-mount/Pole-mount(Optional)	
	Work Temperature	-30°C~+50°C	
	Work Humidity	5%-95%	
	Work Altitude	<2000m	
Package	Product Dimension	452*295*148mm (H*W*D)	
	Package Dimension	570*390*220mm (L*W*H)	
	Net Weight	10.0kg	
	Gross Weight	12.5kg	
	External Package	Carton	



# A29 A32

DC Charger

60kW



Datasheet	Model	TN-QCZ02-A29 TN-QCZ02-A32		
Input	Power Supply	3P+N+PE		
	Rated Voltage	400V AC		
	Rated Current	90A		
	Frequency	50/60Hz		
Output	Output Voltage	200-500V DC	400V AC	200-1000V DC
	Maximum Current	125A	32A	200A
	Rated Power	60kW	22kW	60kW
	Charge Connector	CHAdEMO	Type2	CCS2
User Interface	Cable Length	5m		
	Enclosure	Galvanized steel		
	LCD Display	10" color touch screen		
	LED Indicator	Green/Yellow/Red		
	RFID Reader	Mifare ISO/IEC 14443A		
	Start Mode	Plug&Play/RFID card/App		
	Emergency Stop	Yes		
	POS Terminal	Optional		
	WiFi	Yes		
	Ethernet	Yes		
Communication	3G/4G	Yes		
	OCPP	OCPP 1.6 Json(OCPP 2.0 upgradable)		
	Efficiency	Max 95%		
	Power Factor	>0.99 @ 50%-100% loading		
Electrical Parameter	THD	<5% @ 100% loading		
	Ripple Factor	≤±1%		
	RCD	Type A		
	Ingress Protection	IP54		
Safety	Impact Protection	IK08		
	Electrical Protection	Over current protection, Residual current protection, Short circuit protection, Surge protection, Over/Under voltage protection, Over/Under frequency protection, Over temperature protection		
	Certification	CE		
	Certification Standard	EN IEC 61851-1:2019, IEC 61851-1:2017, EN 61851-23:2014, EN 61851-24:2014		
Environment	Installation	Floor-stand		
	Cooling Method	Fan cooling		
	Noise	≤60dB		
	Work Temperature	-30°C ~ +50°C		
	Work Humidity	5%-95%		
	Work Altitude	<2000m		
Package	Product Dimension	750*525*1830mm (W*D*H)		
	Package Dimension	1020*750*2020mm (L*W*H)		
	Net Weight	228kg		
	Gross Weight	268.5kg		
	External Package	Wood case		

# A30 A31

DC Charger

120kW



Datasheet	Model	TN-QCZ02-A30 TN-QCZ02-A31		
Input	Power Supply	3P+N+PE		
	Rated Voltage	400V AC		
	Rated Current	180A		
	Frequency	50/60Hz		
Output	Output Voltage	200-500V DC	400V AC	200-1000V DC
	Maximum Current	125A	32A	200A
	Rated Power	60kW	22kW	120kW
	Charge Connector	CHAdEMO	Type2	CCS2
User Interface	Cable Length	5m		
	Enclosure	Galvanized steel		
	LCD Display	10" color touch screen		
	LED Indicator	Green/Yellow/Red		
	RFID Reader	Mifare ISO/IEC 14443A		
	Start Mode	Plug&Play/RFID card/App		
	Emergency Stop	Yes		
	POS Terminal	Optional		
	WiFi	Yes		
	Ethernet	Yes		
Communication	3G/4G	Yes		
	OCPP	OCPP 1.6 Json(OCPP 2.0 upgradable)		
	Efficiency	Max 95%		
	Power Factor	>0.99 @ 50%-100% loading		
Electrical Parameter	THD	<5% @ 100% loading		
	Ripple Factor	≤±1%		
	RCD	Type A		
	Ingress Protection	IP54		
Safety	Impact Protection	IK08		
	Electrical Protection	Over current protection, Residual current protection, Short circuit protection, Surge protection, Over/Under voltage protection, Over/Under frequency protection, Over temperature protection		
	Certification	CE		
	Certification Standard	EN IEC 61851-1:2019, IEC 61851-1:2017, EN 61851-23:2014, EN 61851-24:2014		
Environment	Installation	Floor-stand		
	Cooling Method	Fan cooling		
	Noise	≤60dB		
	Work Temperature	-30°C ~ +50°C		
	Work Humidity	5%-95%		
	Work Altitude	<2000m		
Package	Product Dimension	750*525*1830mm (W*D*H)		
	Package Dimension	1020*750*2020mm (L*W*H)		
	Net Weight	228kg		
	Gross Weight	268.5kg		
	External Package	Wood case		

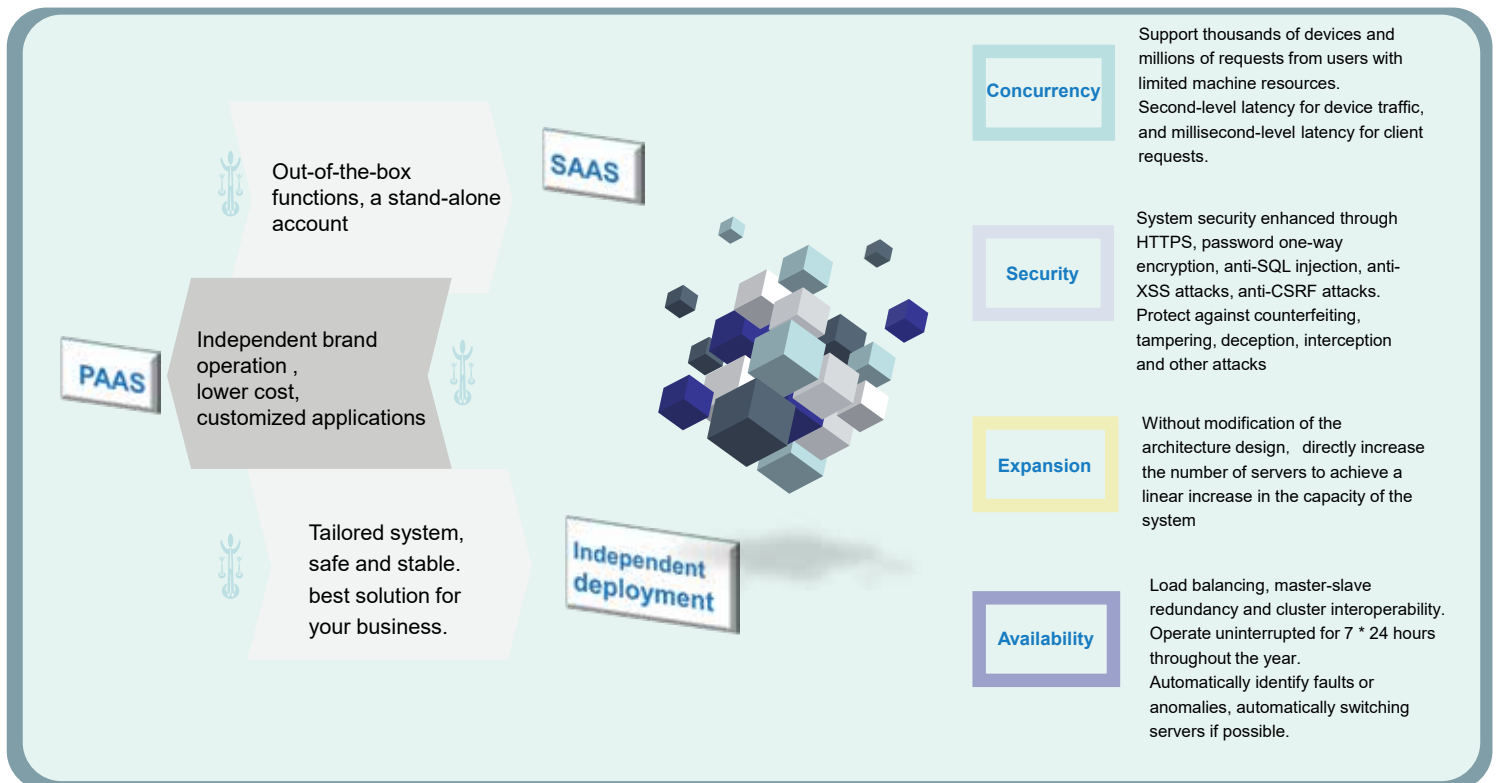
## Rovepower

Own Cloud Software  
Offering the best charging experience

Through the combination of the Internet of Things and intelligent hardware, the cloud platform integrates new energy vehicle operators, automobile service providers, new energy vehicle owners, charging facility manufacturers, new energy charging operators, etc., to build a shared ecosystem with charging services as the core.



## Service



# Energy storage management

**Energy storage management**

- Supports device access of energy storage components
- Revenue calculation + electricity generation statistics
- Real-time query of energy storage device status
- Real-time Alarm
- Remote Configuration Control



**Energy storage advantage**

- The peak arbitrage
- Off-peak compensation
- Improving power quality
- Renewable energy storage boosts revenue



# Digital Energy Management System

**Electric Energy Storage Management Platform**

**Photovoltaic Management Platform**

**Charging Management Platform**

**Microgrid Management Platform**



## HT-Icharge + Fleet

With more than a decade of experience, HT-Icharge understands the unique charging requirements of electric light-, medium-, and heavy-duty fleets. We work with you to customize solutions that maximize operational performance and future-proof your electrification plans as you scale.

HT-Icharge has established cooperative relations with a number of electric bus operating companies and logistics companies to provide fast and efficient charging services.



## HT-Icharge + Parking facilities



Create additional revenue, encourage loyalty, and become an EV driver destination by providing EV chargers in parking facility. Attract customers with EV apps that identify charging stations for drivers.

## HT-Icharge + Ride Hailing

Looking for a convenient and fast charging solution for your electric vehicle? Look no further! Our new high-power charging stations are the perfect solution for eco-conscious commuters. Whether you're a busy driver on the go or a tourist exploring the area, we've got you covered.



Located in prime locations throughout scenic areas, industrial parks, and commercial centers, our charging stations offer a convenient and worry-free way to power up your vehicle. With our high-power charging station, you can enjoy fast charging that gets you back on the road in no time.



**PT VOKSEL ELECTRIC Tbk.**  
A MEMBER OF HENGSTONG GROUP



## **PT Voksel Electric Tbk.**

### **Executive Office**

Menara Karya 3rd Floor, Suite D,  
Jl. HR. Rasuna Said Blok X-5 Kav 1-2,  
Jakarta 12950 - Indonesia  
Phone : (+62 21) 5794 4622

### **Factory & Operational Office**

Jl. Raya Narogong Km. 16,  
Cileungsi, Bogor 16820 - Indonesia  
Phone : (+62 21) 8230 525, 8249 1720

### **Customer Service**

Phone : (+62 21) 8249 3329  
Email : [sales@voksel.co.id](mailto:sales@voksel.co.id)